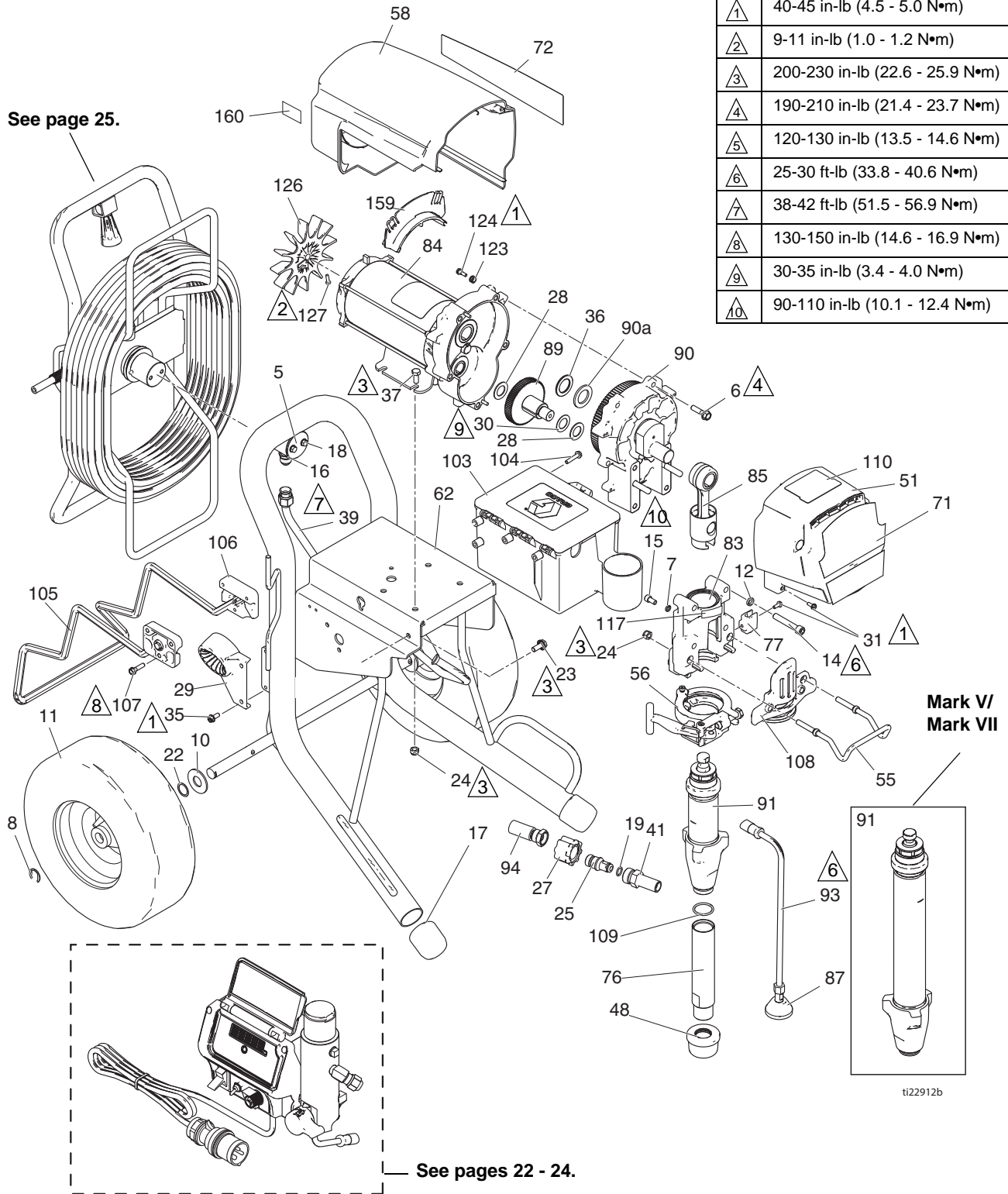


1095/MARK V/Mark VII ProContractor

Ref.	Torque
①	40-45 in-lb (4.5 - 5.0 N•m)
②	9-11 in-lb (1.0 - 1.2 N•m)
③	200-230 in-lb (22.6 - 25.9 N•m)
④	190-210 in-lb (21.4 - 23.7 N•m)
⑤	120-130 in-lb (13.5 - 14.6 N•m)
⑥	25-30 ft-lb (33.8 - 40.6 N•m)
⑦	38-42 ft-lb (51.5 - 56.9 N•m)
⑧	130-150 in-lb (14.6 - 16.9 N•m)
⑨	30-35 in-lb (3.4 - 4.0 N•m)
⑩	90-110 in-lb (10.1 - 12.4 N•m)



1095/MARK V/Mark VII ProContractor Parts List

Ref.	Part	Description	Qty.	Ref.	Part	Description	Qty.
5	16C975	PLATE, pivot	1	77	16X203	CLIP, drain line	1
6	15C753	SCREW, mach, hex wash hd	5	83	24V088	HOUSING, bearing; <i>includes 7, 12, 14, 15, 24, 31, 55, 56, 77, 108, 117</i>	1
7	105510	WASHER, lock	2				
8	15E891	CLIP, retaining	2	84		MOTOR, electric; <i>includes 126, 127</i>	1
10	156306	WASHER, flat	2		257187	1095/Mark V	
11	119509	WHEEL, pneumatic	2		257188	Mark VII/UK Mark V	
12	106115	WASHER, lock (hi-collar)	4	85	24V085	ROD, connecting	1
14	114666	SCREW, cap, socket head	4	87	241920	DEFLECTOR, threaded	1
15	101550	SCREW, cap, sch	2	89	287290	GEAR, combination; <i>includes 28, 30</i>	1
16	121311	FITTING, connector	1				
17	276974	CAP, leg	2	90		HOUSING, drive, M1; <i>includes 6, 36, 90a</i>	1
18	260212	SCREW, hex washer hd	2				
19		PACKING, o-ring	1		24M417	Mark VII	
	107505	1095			287295	1095/Mark V	
	102982	Mark V/Mark VII			287294	Mark V, Japanese Model	
22	116038	WASHER, wave spring	2	90a	194173	WASHER, race, thrust	1
23	117791	SCREW, cap tri lobe	2	91		PUMP, displacement; <i>includes 41, 76, 109</i>	1
24	111040	NUT, lock, insert	6				
25	16X833	FITTING, quick disconnect, (1095 only)	1		16X419	1095 Models	
					16Y602	Mark VII Models	
27	120583	NUT, hand (1095 only)	1		16X421	Mark V Models	
28	114672	WASHER, thrust	2	93	244240	HOSE, drain; <i>includes 87</i>	1
29		BRACKET, hose, wrap	1	94		HOSE, coupled	1
	278083	1095/Mark V			16X904	1095	
	24M197	Mark VII			24V029	Mark V/Mark VII; <i>includes 19</i>	
30	114699	WASHER, thrust	1	103	287253	TOOL BOX; <i>includes 104</i>	1
31	118444	SCREW, mach, slot hex wash hd	5	104	118852	SCREW, thd forming, hex washer hd	3
35	117633	SCREW, slot hex wash hd	2	105	16X698	HANGER, stand, cart	1
36	116192	WASHER, thrust, 1595	1	106	15C982	CAM, cart	2
37	100057	SCREW, cap, hex hd	4	107	114531	SCREW, mach, hex washer hd	4
39	24J081	TUBE, formed, ultra, platinum	1	108	16X385	PLATE, front, 5900 PCII	
41		FITTING, pump, QD	1	109	118494	PACKING, o-ring	1
	16Y579	1095		110	16X981	LABEL, premium	1
	16X834	Mark V/Mark VII		117	187437	LABEL, torque	1
48	189920	STRAINER, (1-11 1/2 npsm)	1	123	276980	GROMMET, cover	2
51	24V024	COVER, drive, plastic, painted; <i>includes 31</i>	1	124	119250	SCREW, shoulder	3
				126	15D088	FAN, motor	1
55	16C457	HANGER, pail	1	127	115477	SCREW, mach, torx pan hd	1
56	16X324	CLAMP, pump, large	1	128▲	222385	TAG, warning (not shown)	
58	287282	SHIELD, motor, painted; <i>includes 123, 124</i>	1	159	278075	BRACKET, wire	1
				160	15Y118	LABEL, Made in the USA	1
62	24Y426	FRAME, platinum, 1095/MARK V	1				
71		LABEL, brand, front	1				
	16X368	1095					
	16X360	Mark V					
	16Y960	Mark VII					
72		LABEL, brand, side	1				
	16X369	1095					
	16X361	Mark V					
	16Y961	Mark VII					
76	248215	TUBE, intake; <i>includes 109</i>	1				

▲ Extra Danger and Warning tags and labels available free.